

USV platform for inland & coastal applications

iUSV-170

Spacious flexible low weight adaptive USV platform for both inland and coastal applications. Low weight <15kgr and small dimensions <1.1 m² for easy / quick field deployment. Onboard power supply can assist various concurrent needs and payloads. Scalable and future proof.

Standard multiplatform version

- 2/4 motors for differential skid steering or vectored steering
- long range telemetry (> 10 km)
- real time HD video range >4 km
- RKT GNSS base & rover (GPS, GLONASS, Galileo, BeiDou, QZSS)
- 2 X long range telemetry systems
- 2 X battery control subsystems,
- 3 x gyroscopes
- 3 x accelerometers
- 3 x magnetometers

Options for a variety of sensors, depending on the applications

Designed & Built by



INLAND AND COASTAL APPLICATIONS

Hydrographic surveys

- Single beam echosounder
- Multi beam echosounder

Infrastructure surveys

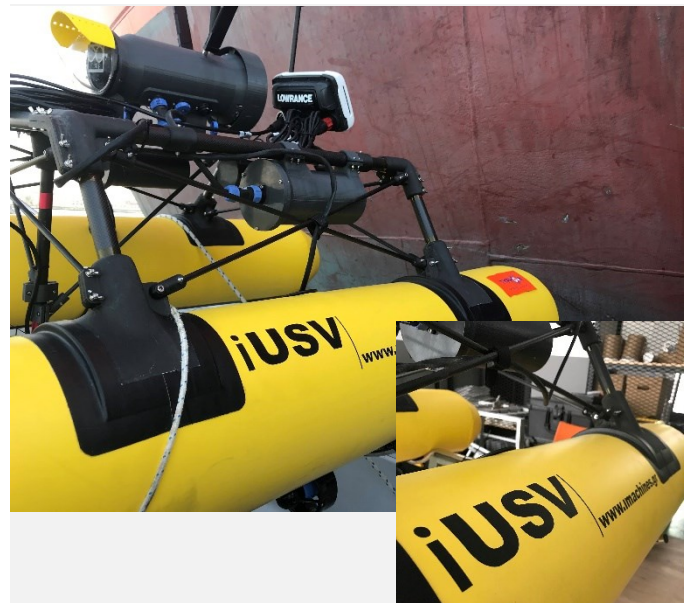
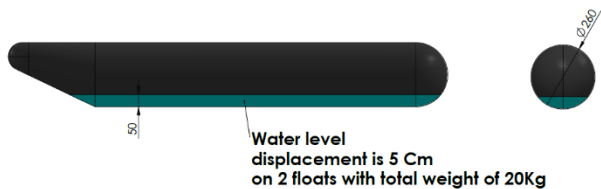
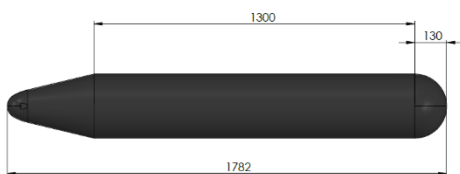
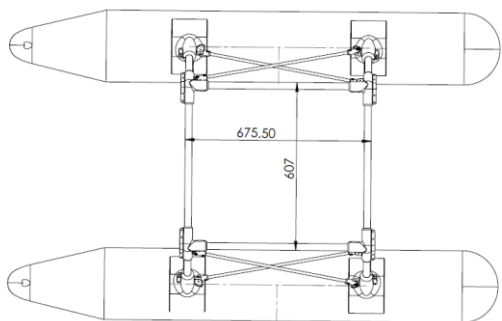
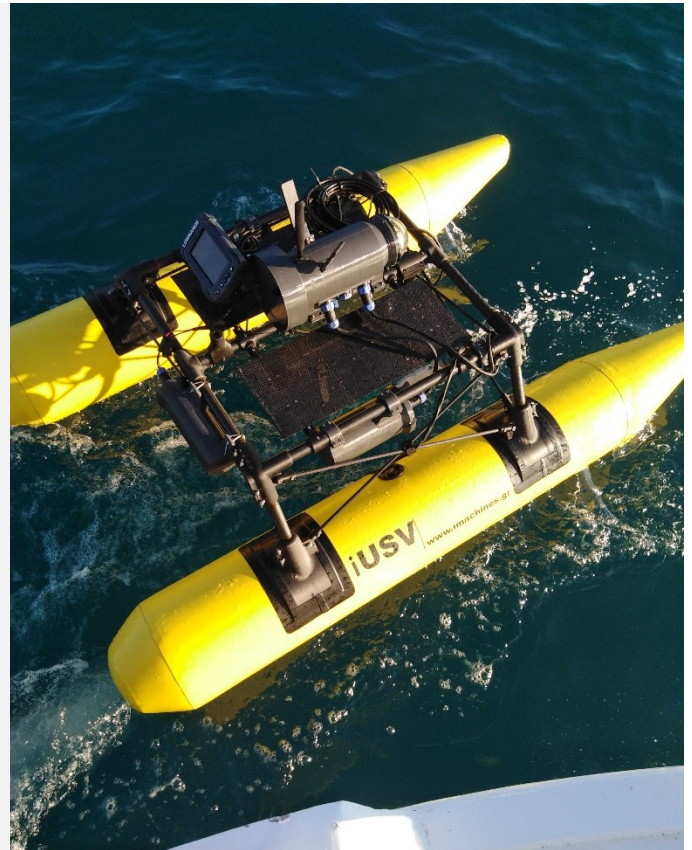
- Ports / harbors surveys

Fishery applications

- Water quality
- Fish detection / tracking

Scientific research

- Water quality measurements (surface / profiling)
- Remote monitoring



Contact us for more information.